

# GEC

Student Residences  
In Metro Vancouver

2019 - 2020



## About GEC

GEC provides fully furnished, safe, and comfortable accommodations to foreign and domestic students at affordable rates. Our goal is to give students an effortless transition into Vancouver so that they have more time to spend on their studies and social activities.

## GEC Advantages



### Flexible Stay

In Vancouver the vast majority of apartments require a minimum 1-year lease. At GEC, we offer daily, weekly, and monthly rental options depending on the location. We also provide flexible move-in and move-out dates at GEC downtown locations.



### Hassle Free, Fully Furnished and Serviced

Suites come fully furnished and include utilities, Wi-Fi and weekly housekeeping so there is no need for you to call service providers on arrival.



### 24 Hour Student Care

Security/concierge on site after office hours and on the weekend, and all cameras are monitored 24 hours a day.



### Great Locations

All GEC residences are located in close proximity to public transportation. Please look at the map of downtown Vancouver to see how close your school is to our GEC downtown locations.





### GEC Events

GEC students can enjoy our monthly social events. This is a great way of making new friends and joining our community.



### Wide Variety of Accommodation Options

We have residences that not only cater to students (single and couples), but also have units available for visiting parents and family to rent. GEC staff can help recommend which accommodations suit your needs the best.



### Affordable Living

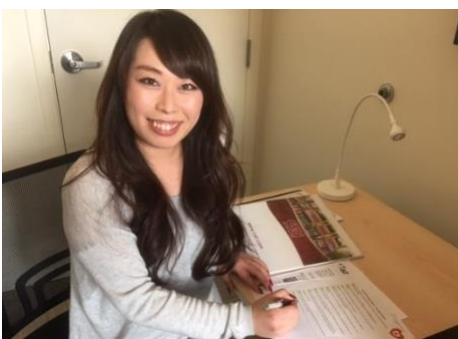
Living in Vancouver can be very expensive. GEC rates are very reasonable and include all utilities. Please look at the information below for average hotel and apartment prices in Vancouver for comparison.

Rent Comparison: GEC and other accommodation					
	Typical 1 Bedroom Apartment	Typical Hotel Room	GEC VIVA (Shared Room)	GEC VIVA (Private Room)	GEC Granville (Private Suite)
Rent	\$2000	\$2600 (not available May to September)	\$1116	\$1519	\$2050 (not available May to September)
Hydro	\$30	\$0	\$0	\$0	\$0
Internet	\$45	\$0	\$0	\$0	\$0
TV Cable	\$35	\$0	Netflix \$0	Netflix \$0	\$0
Furnished	NO	YES	YES	YES	YES
Min Rental	1 Year	No	1 Month	1 Month	1 Month
<b>TOTAL</b>	<b>\$2,110</b>	<b>\$2,600</b>	<b>\$1116</b>	<b>\$1,519</b>	<b>\$2,050</b>

- GEC rates in the table are based on 2019 GEC rate when staying for more than 6 months.

### Voices from GEC Students

We really like it here at GEC VIVA! We attend Blanche Macdonald Centre downtown and the location of VIVA Suites are very convenient and close to our school. We communicate with our roommates often and all get along great. We like the interior of our suite and if there are any maintenance problems, the staff at GEC are quick to find a solution. Overall our stay has been very enjoyable. -Emalie and Meaghan, Edmonton, Canada.



It is my very first time studying abroad! My ESL school, CSLI, is only a 15-minute walk from GEC Viva. I am very happy with the great service provided by the GEC staff. I feel very safe and secure since there is a security guard on site after office hours and on weekends. I have also enjoyed the great views from my suite. -Mayumi, Japan.



# GEC Comparison Chart

Room Types				
	GEC VIVA	GEC Granville	GEC Burnaby Heights	GEC Pearson
Private bedroom (Shared bathroom and kitchen)	✓		✓	✓
Shared bedroom (Shared bathroom and kitchen)	✓		✓	✓
Private apartment, Studio		✓		✓
Private apartment, 1 bedroom	✓		✓	✓
Private apartment, 2 bedroom			✓	✓
Requirements				
Minimum age	18	18	18	18
Minimum rental	5 weeks	1 night	5 weeks	8 weeks
Students only	✓		✓	✓
Services				
Wi-Fi	✓	✓	✓	✓
Utilities	✓	✓	✓	✓
Netflix	✓	Cable TV	✓	✓
Weekly housekeeping (Common Area)	✓	✓	✓	✓
In suite-laundry	✓	Common Laundry	✓	✓
Fitness Centre	✓	✓		✓
Air conditioning		✓		
Check-in hours	4pm to 11pm	24 hours (after 4pm)	3pm to 11pm	4pm to 7pm
Concierge/Front desk	✓	✓		
Live-in caretaker			✓	✓
Furniture/appliances				
Bed	✓	✓	✓	✓
Desk and chair	✓	✓	✓	✓
Dining table	✓		✓	✓
Hair dryer	✓	✓	✓	✓
TV		✓	✓	
Wardrobe/closet	✓	✓	✓	✓
Other items				
Linens	✓	✓	✓	✓
Towels	✓	✓	✓	\$10
1 roll of toilet paper	✓	✓	✓	✓
Kitchenware (Utensils, Pots and pans, microwave, coffee maker, kettle, toaster)	✓	Common kitchen	✓	✓
Plates, cups and cutleries	✓	✓	✓	✓

# GEC VIVA

1311 Howe Street, Vancouver, BC

# GEC VIVA



## GEC VIVA Highlights

- ✓ Downtown Vancouver (Drake Street & Howe Street)
- ✓ Great common areas to socialize in each suite
- ✓ Reasonably priced and comfortable
- ✓ 5 weeks stay minimum
- ✓ Minimum age: 18 years old

## Services Included:

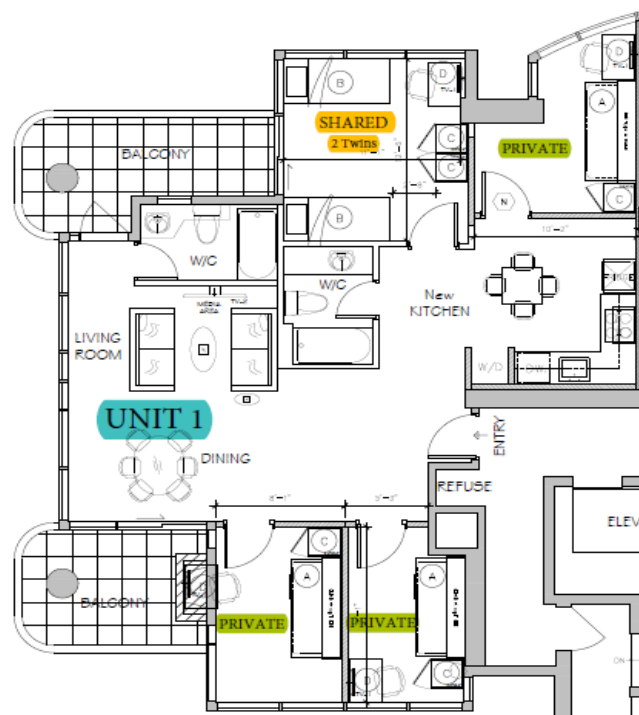
- ✓ Fully furnished suites (shared kitchen and shared bathroom)
- ✓ Fitness centre
- ✓ Concierge/Security
- ✓ Wi-Fi, Netflix, and utilities included
- ✓ Weekly housekeeping (common area only)
- ✓ Common areas in each unit

**Room Types:** All rooms have access to a shared kitchen and common area.

- Shared bedroom (2 twin beds/1 bunk bed)
- Private bedroom (1 twin bed/1 bunk bed)
- Private apartment, 1 bedroom with a private bathroom and kitchen

Included in all rooms: desk, twin bed, wardrobe

## Sample Floor Plan



Please call GEC for a tour today:

@ +1 (604) 669-6686 or

Email: [info@studentcommunity.ca](mailto:info@studentcommunity.ca)

Live  
Easy  
**STUDY  
HARD GEC**  
GLOBAL EDUCATION CITY

[www.studenthotel.ca](http://www.studenthotel.ca)

GEC VIVA 1311 Howe Street, Vancouver, BC

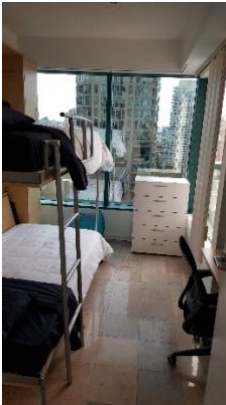


## Room Types at GEC VIVA

### Shared apartments

\*A kitchen and bathroom(s) are shared with other roommates in the apartment.

#### Shared bedrooms



##### **Economy, Shared bedroom (July and August only)**

- 1 bunk bed
- A desk and a chair are shared between 2 students in the bedroom

#### Private bedrooms



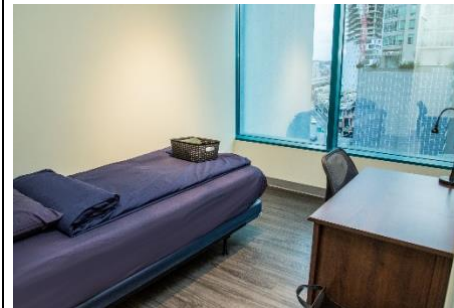
##### **Economy, Semi-private bedroom**

- This bedroom with partitions is located in the living room
- 1 twin bed
- 1 student in the bedroom



##### **Standard, Shared bedroom**

- 1 bunk bed or 2 twin beds
- 2 students in the bedroom



##### **Standard, Private bedroom**

- 1 bunk bed or 1 twin bed
- 1 student in the bedroom



##### **Premium, Shared bedroom (Penthouse)**

- 2500 sq suite on the penthouse floor
- 2 twin beds
- 2 students in the bedroom

### Private apartments



##### **Standard, 1 bedroom apartment (560sq.)**

- 1 bunk bed
- 2 students in the apartment
- 1 full bathroom



##### **Premium, 1 bedroom apartment (745 sq.)**

- 1 Bunk bed & 1 twin bed
- 1 bedroom and semi-private room
- 3 students in the apartment
- 1 full bathroom

# GEC Granville

718 Drake Street, Vancouver, BC

# GEC GRANVILLE



King Bed with Kitchenette



## GEC Granville Highlights

- ✓ Downtown Vancouver (Drake Street & Granville Street)
- ✓ Private suites available (suitable for couples & families)
- ✓ Hotel luxury at affordable prices
- ✓ Daily, weekly, and monthly rates
- ✓ Minimum age: 18 years old

## Services Included:

- ✓ Fully furnished suites
- ✓ Wi-Fi and basic TV cable
- ✓ Fitness centre
- ✓ Concierge/Security -24 hours
- ✓ A/C and utilities included
- ✓ Weekly housekeeping
- ✓ Study room and social lounge
- ✓ Common kitchen

**Room Types:** All rooms come with a microwave and fridge.

- Premium: Private Suite
  - Queen bed
  - 2 Double beds
  - King bed with kitchenette
  - 2 Double beds with kitchenette

2 double beds



Queen Bed



**STUDY** **Live**  
**HARD** **Easy**  
**GEC**  
GLOBAL EDUCATION CITY

Please call GEC for a tour Today:

@ +1 (604) 669-6686 or

Email: [info@studentcommunity.ca](mailto:info@studentcommunity.ca)

[www.studenthotel.ca](http://www.studenthotel.ca)

GEC Granville 718 Drake Street. Vancouver. BC



# GEC Burnaby Heights

438 Gamma Avenue, Burnaby, BC V5C 0J7



Living Room and Kitchen

## GEC Burnaby Heights Highlights

- ✓ The residence opened in 2016
- ✓ Easy access to Capilano U, SFU and BCIT
- ✓ 30 minutes to downtown by bus
- ✓ Close to many restaurants and grocery store
- ✓ 5 weeks stay minimum
- ✓ Minimum age: 18 years old

## Services Included:

- ✓ All suites with balconies
- ✓ Fully furnished
- ✓ Fully equipped kitchen
- ✓ Weekly housekeeping
- ✓ Wi-Fi, Netflix, Smart TV and utilities included
- ✓ In-suite laundry

**Room Types:** a desk, twin bed, wardrobe/closet are included in all apartments.

- **Shared bedroom** (1 bunk bed)
- **Private bedroom** (1 bunk bed)
- **Private apartment, 1 Bedroom**
- **Private apartment, 2 Bedroom**

\*All rooms have access to a shared kitchen, a shared bathroom and common area.



## Location

Located at 438 Gamma Avenue, Burnaby, this residence is situated near many parks and other amenities. Bus stops are only minutes walk away and the ride to downtown takes approximately 30 minutes.

Please call GEC for an inquiry today:

@ +1 (604) 669-6686 or

Email: [info@studentcommunity.ca](mailto:info@studentcommunity.ca)

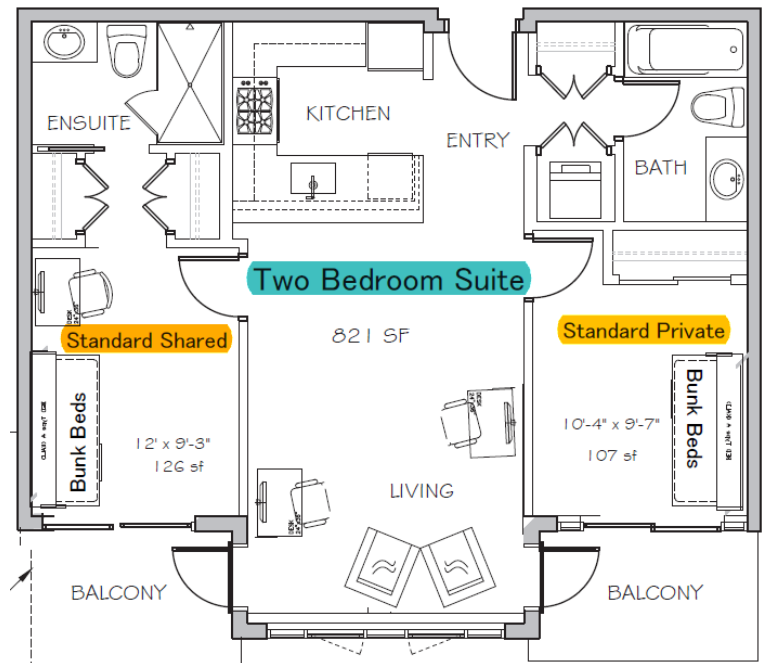
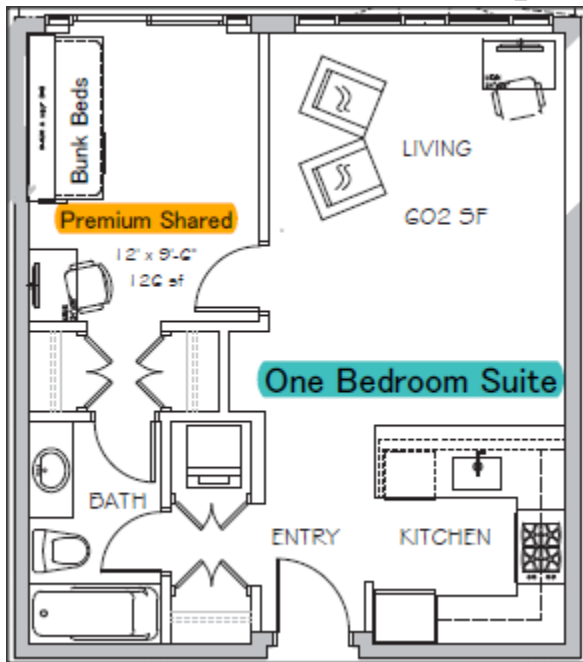
**STUDY**  
**HARD**  
**GEC**  
GLOBAL EDUCATION CITY

[www.studenthotel.ca](http://www.studenthotel.ca)

GEC Burnaby Heights 438 Gamma Avenue, Burnaby



# GEC Burnaby Heights Sample Floor plan



# GEC Pearson

Cambie St. and 61<sup>st</sup> Avenue



## GEC Pearson Highlights

- ✓ Brand-new facility for 2018
- ✓ 8 minute walk to Marine Drive station
- ✓ 25 minutes to downtown by skytrain
- ✓ Easy access to Langara College, KPU Richmond campus

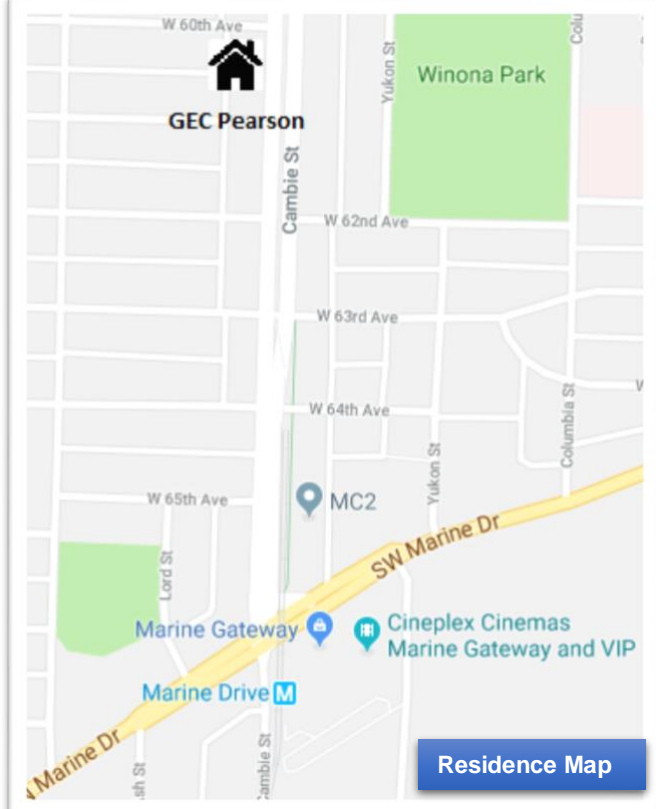
## Services Included:

- ✓ Brand-new suites with balconies
- ✓ Fully furnished
- ✓ Fully equipped kitchen
- ✓ Weekly housekeeping
- ✓ Wi-Fi and utilities included
- ✓ In-suite laundry

**Room Types:** a desk, bunk bed, wardrobe/closet are included in all apartments.

- **Shared bedroom** (2 bunk beds/ 1 bunk bed)
- **Private bedroom** (1 bunk bed)
- **Semi-private bedroom**
- **Private apartment, Studio and 1 Bedroom**

\*All rooms have access to a shared kitchen, a shared bathroom and common area.



■ **Location**-Located at Cambie St. and 61<sup>st</sup> Avenue, Vancouver, this residence is situated in a quiet neighborhood with many parks and a shopping center located nearby. With just a short walk to the Skytrain, it is a convenient commute to many schools.





## Room Types at GEC Pearson

### Shared apartments

\*A kitchen and bathroom(s) are shared with other roommates in the apartment.



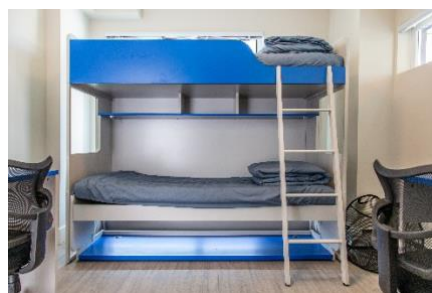
#### Budget, Quad-shared bedroom

- 2 bunk beds
- A desk and a chair are shared between 2 students in the bedroom



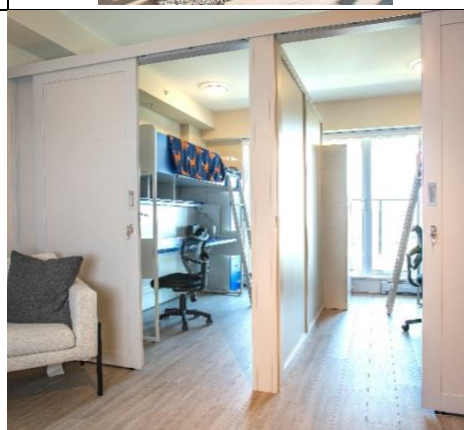
#### Premium, Shared bedroom

- 1 bunk bed or 2 bunk beds
- 2 students in the entire apartment (Studio or 1 bedroom apartment)



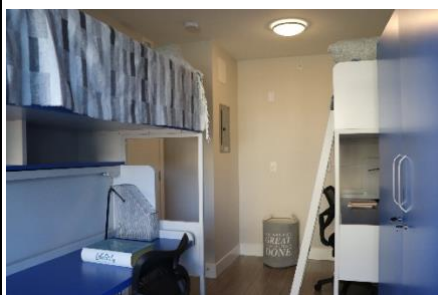
#### Economy, Shared bedroom

- 1 Bunk bed
- 2 students in the bedroom



#### Economy, Semi-private bedroom

- This bedroom with partitions is located in the living room
- 1 twin bed
- 1 student in the bedroom



#### Standard, Shared bedroom

- 2 Bunk beds
- 2 students in the bedroom



#### Standard, Private bedroom

- 1 bunk bed or 1 twin bed
- 1 student in the bedroom

### Private apartments



#### Standard, Studio Apartment (430 sq.)

- 2 students in the apartment
- 1 full bathroom



#### Standard, 1 bedroom apartment (450 sq.)

- 1 Bunk bed
- 2 students in the apartment
- 1 full bathroom

# Booking Procedure



1. Choose which GEC location you like the best. GEC representatives are available to assist.
2. Check availability for your chosen GEC residence.
3. Submit a booking request form with chosen dates and a copy of your valid passport.
4. GEC will send you a contract and invoice shortly.
5. Send a signed contract, a copy of your passport and pay your deposit and amenities fee to GEC.
6. Your reservation is confirmed!





GLOBAL EDUCATION CITY

## Amenities Fee

# GEC Rate 2019 (Student Rates)

Rates are effective till the end of December 2019. (CAD \$)

**\$50+GST 5% each reservation (non-refundable)**

GEC VIVA: (Downtown Vancouver: 1311 Howe Street)			Weekly Rate per bed (7 nights)				
Shared Apartments		SQF of a bedroom	5-7	8-11	12-23	24-35	36 or more
<b>Economy</b>	Shared bedroom, 1 bunk bed (July & August)	app. 70 SF	\$266	\$259	\$252	\$245	\$238
<b>Standard</b>	Shared bedroom, 2 TWIN beds/1 bunk bed	app. 100 SF	\$273	\$266	\$259	\$252	\$245
<b>Premium</b>	Shared bedroom, 2 TWIN beds (Penthouse)	app. 100 SF	\$322	\$308	\$294	\$287	\$280
<b>Economy</b>	Semi-private bedroom, 1 TWIN bed	app. 60 SF	\$322	\$308	\$294	\$287	\$280
<b>Standard</b>	Private bedroom, 1 TWIN bed/1 bunk bed	app. 70 SF	\$371	\$357	\$350	\$343	\$336
Private Apartments		SQF	Weekly Rate per apartment (7 nights)				
<b>Standard</b>	Private apartment, 1 bedroom	app. 560 SF	\$693	\$686	\$672	\$665	\$658
<b>Premium</b>	Private apartment, 1 bedroom	app. 745 SF	\$847	\$840	\$826	\$812	\$798

**Note:** Minimum occupancy: 5 weeks. Weekly rates are charged from Saturday to Saturday or Sunday to Sunday regardless of weekday check-in/out.

GEC Pearson: (Vancouver)			Weekly Rate per bed (7 nights)				Monthly Rate
Shared Apartments		SQF of a bedroom	8-11	12-23	24-35	36 or more	Semester Monthly Rate
<b>Budget</b>	Quad-shared bedroom, 2 bunk beds	app. 70 SF	\$196	\$182	\$175	\$168	\$750
<b>Economy</b>	Shared bedroom, 1 bunk bed	app. 100 SF	\$259	\$245	\$238	\$231	\$995
<b>Standard</b>	Shared bedroom, 2 separate beds	app. 120 SF	\$266	\$252	\$245	\$238	\$1,050
<b>Premium</b>	Shared bedroom, 1 bunk bed (2 students in the entire apartment)	app. 100 SF	\$308	\$294	\$287	\$280	\$1,150
<b>Economy</b>	Semi-private bedroom, 1 bunk bed	app. 70 SF	\$308	\$294	\$287	\$280	\$1,150
<b>Standard</b>	Private bedroom, 1 bunk bed	app. 100 SF	\$343	\$329	\$322	\$315	\$1,295
Private Apartments		SQF of an apartment					Semester Monthly Rate
<b>Standard</b>	Private apartment, Studio	app. 430 SF	\$609	\$581	\$567	\$553	\$2,250
<b>Standard</b>	Private apartment, 1 bedroom	app. 450 SF	\$616	\$588	\$574	\$560	\$2,300

**Note:** Minimum occupancy: 5 weeks. Weekly rates are charged from Saturday to Saturday or Sunday to Sunday regardless of weekday check-in/out. Semester monthly rate is minimum 4 months and starts September 1<sup>st</sup>, January 1<sup>st</sup> and May 1<sup>st</sup> only.

GEC Granville: (Downtown Vancouver: 718 Drake Street, Vancouver)					
	Room Type	Length	January to April/ October to December	May	June to September
<b>Premium</b> Private suite	1 QUEEN bed or 2 DOUBLE beds	Weekly	\$616	\$980	\$1,435
		Monthly	\$1,950	\$2,050	Not Available
<b>Premium</b> Private suite	<b>With Kitchenette</b> 1 KING bed or 2 DOUBLE beds	Weekly	Not Available	\$1,260	\$1,645
		Monthly	\$2,050	\$2,150	Not Available

**Note:** Nightly rates are available. Please contact GEC representatives for more information.

GEC Burnaby Heights: (438 Gamma Avenue, Burnaby)							
Shared Apartments		Weekly Rate per bed (7 nights)					Semester Monthly Rate
		5-7	8-11	12-23	24-35	36 or more	
<b>Standard</b>	Shared bedroom, 2 bunk beds	\$252	\$238	\$231	\$224	\$217	\$950 per bed
<b>Premium</b>	Shared bedroom, 2 bunk beds	\$266	\$252	\$245	\$238	\$231	\$1050 per bed
<b>Standard</b>	Private bedroom, 1 TWIN bed	\$343	\$329	\$322	\$315	\$308	\$1,250
Private Apartments							
<b>Standard</b>	Private Apartment, 1 bedroom	\$490	\$476	\$469	\$462	\$455	\$1,900
<b>Standard</b>	Private Apartment, 2 bedroom	\$966	\$952	\$945	\$938	\$931	\$3,750

**Note:** Minimum occupancy: 5 weeks. Weekly rates are charged from Saturday to Saturday or Sunday to Sunday regardless of weekday check-in/out. Semester monthly rate is minimum 4 months and starts September 1<sup>st</sup>, January 1<sup>st</sup> and May 1<sup>st</sup> only.

Last update April 16, 2019/ Subject to change / For latest rate, please contact GEC at [info@studentcommunity.ca](mailto:info@studentcommunity.ca).



GLOBAL EDUCATION CITY

## GEC Rate 2020 (Student Rates)

Rates are effective from January 1<sup>st</sup>, 2020, till the end of December 2020. (CAD \$)

### Amenities Fee

**\$75+GST 5% each reservation (non-refundable)**

GEC VIVA: (Downtown Vancouver: 1311 Howe Street)			Weekly Rate per bed (7 nights)				
Shared Apartments		SQF of a bedroom	5-7	8-11	12-23	24-35	36 or more
<b>Economy</b>	Shared bedroom, 2 bunk beds (July & August )	app. 70 SF	\$266	\$259	\$252	\$245	\$238
<b>Standard</b>	Shared bedroom, 2 TWIN beds/bunk bed	app. 100 SF	\$273	\$266	\$259	\$252	\$245
<b>Premium</b>	Shared bedroom, 2 TWIN beds (Penthouse)	app. 100 SF	\$329	\$315	\$308	\$301	\$294
<b>Economy</b>	Semi-private bedroom, 1 TWIN bed	app. 60 SF	\$329	\$315	\$308	\$301	\$294
<b>Standard</b>	Private bedroom, 1 TWIN bed	app. 70 SF	\$378	\$364	\$357	\$350	\$343
Private Apartments		SQF	Weekly Rate per apartment (7 nights)				
<b>Standard</b>	Private apartment, 1 bedroom	app. 560 SF	\$693	\$686	\$672	\$665	\$658
<b>Premium</b>	Private apartment, 1 bedroom	app. 745 SF	\$847	\$840	\$826	\$812	\$798

**Note:** Minimum occupancy: 5 weeks. Weekly rates are charged from Saturday to Saturday or Sunday to Sunday regardless of weekday check-in/out.

GEC Pearson: (Vancouver)			Weekly Rate per bed (7 nights)				Monthly Rate
Shared Apartments		SQF of a bedroom	8-11	12-23	24-35	36 or more	Semester Monthly Rate
<b>Budget</b>	Quad-shared bedroom, 2 bunk beds	app. 70 SF	\$196	\$182	\$175	\$168	\$750
<b>Economy</b>	Shared bedroom, 1 bunk bed	app. 100 SF	\$259	\$245	\$238	\$231	\$995
<b>Standard</b>	Shared bedroom, 2 separate beds	app. 120 SF	\$266	\$252	\$245	\$238	\$1,050
<b>Premium</b>	Shared bedroom, 1 bunk bed (2 students in the entire apartment)	app. 100 SF	\$308	\$294	\$287	\$280	\$1,150
<b>Economy</b>	Semi-private bedroom, 1 TWIN bed	app. 70 SF	\$308	\$294	\$287	\$280	\$1,150
<b>Standard</b>	Private bedroom, 1 TWIN bed	app. 100 SF	\$350	\$336	\$329	\$322	\$1,395
Private Apartments		SQF of an apartment					Semester Monthly Rate
<b>Standard</b>	Private apartment, Studio	app. 430 SF	\$609	\$581	\$567	\$553	\$2,250
<b>Standard</b>	Private suite, 1 bedroom	app. 450 SF	\$616	\$588	\$574	\$560	\$2,300

**Note:** Minimum occupancy: 5 weeks. Weekly rates are charged from Saturday to Saturday or Sunday to Sunday regardless of weekday check-in/out. Semester monthly rate is minimum 4 months and starts September 1<sup>st</sup>, January 1<sup>st</sup> and May 1<sup>st</sup> only.

GEC Granville: (Downtown Vancouver: 718 Drake Street, Vancouver)					
	Room Type	Length	January to April/ October to December	May	June to September
<b>Premium</b> Private suite	1 QUEEN bed or 2 DOUBLE beds	Weekly	\$630	\$1,225	\$1,526
		Monthly	\$2,200	\$2,400	Not Available
<b>Premium</b> Private suite	<b>With Kitchenette</b> 1 KING bed or 2 DOUBLE beds	Weekly	Not Available	\$1,435	\$1,715
		Monthly	\$2,300	\$2,500	Not Available

**Note:** Nightly rates are available. Please contact GEC representatives for more information.



## GEC policy & payment method

GEC Cancellation Policy	
Cancellation Notice Receiving Date	Cancellation Fee
<b>Before Check-In</b>	
30 days' notice or more before check-in date	No cancellation fee
Less than 30 days' notice before check-in date	Deposit will not be refunded
<b>After Check-In</b>	
61 days' notice or more before contract check-out date	Deposit will not be refunded *The rent during the notice period is still required.
60 days' notice or less before contract check-out date	Rent for the remaining period of contract

- **Amenities fee is non-refundable.**
- The written notice has to be provided when cancelling. When visas are denied, the official refusal letter from CIC has to be submitted to get a full refund more than 14 days prior to check-in date.
- Tax (16%) will be charged for stays (not Burnaby) of one month or less and a FULL payment will be required upon check-in.
- Tenants are required to pay rent for the duration of their stay.

Payment	Due Dates	Payment Methods
<b>Deposit</b> <b>Amenities fee</b>	Within 7 days after an invoice is issued	Rent Moola* (credit card)
<b>1<sup>st</sup> month rent</b>	A week or more prior to check-in date	Rent Moola*, Wire transfer, Cheque/Cash
<b>Monthly rent</b>	1 <sup>st</sup> day of every calendar month	Rent Moola*, Wire transfer, Cheque/Cash

- Failure to pay rent on time may result in late fee charge or eviction.
- Damage deposit is equal to rent for 2 weeks or 50% of one month rent and can be paid only by **credit card**.
- Damage deposit is fully refunded to tenants within 2 weeks after check-out date if there is no damage made to the residence.
- The processing fee will apply to deposit and rent payments by credit card and by wire transfer (\$15 per transfer).
- **Processing fees are non-refundable.**
- Rooms will only be reserved once we receive your amenities fee, deposit, a copy of passport and signed contract.



## MAKE A PAYMENT



**\*RentMoola** is an online global payment network that allows tenants to pay rent and other payments by credit card, debit rewards.

Once your booking is completed, we will send you an email with a RentMoola payment guide. You can follow the guide and input your credit card information, in order to process your deposit (credit cards only) and rent.

RentMoola	Canadian Processing Fees	International Processing Fees
RM eCheque*	\$1.99 per transfer	N/A
Visa Debit	0.75%	1.75%
MasterCard Debit	0.65%	1.65%
Visa	1.75%	2.99%
MasterCard	1.65%	2.99%
American Express	2.75%	

\*domestic accounts only



A MEMBER OF CIBT EDUCATION GROUP

✉ [info@studentcommunity.ca](mailto:info@studentcommunity.ca)

🌐 [www.studentcommunity.ca](http://www.studentcommunity.ca)

📘 @gecliving

📷 @gecliving

☎ 604.669.6686

Management Office:

Global Education City Holdings Inc. 202-1311 Howe Street, Vancouver, B.C., Canada V6Z 2P3